



**Platinum  
Metals**

## Platinum **SELECT SERIES** SMP COLORS

All Select Series Colors are available for any 26g or 28g product

### Standard Select Colors

These colors are our Standard SMP Colors



Ash Gray



Black



Bone White



Bright White



Burgundy



Burnished Slate



Charcoal



Cocoa Brown



Dark Red



Desert Sand



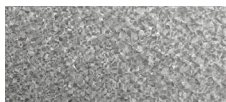
Gallery Blue



Driftwood



Evergreen



Galvalume



Hawaiian Blue



Ivory



Light Gray



Light Stone



Rustic Red



Sahara Tan



Slate



Taupe

### Premium Select Colors

These colors are our Premium SMP Colors - Additional Costs may apply



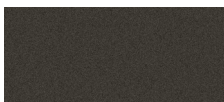
Ash Gray Frost



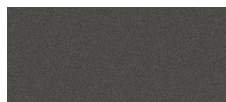
Black Frost



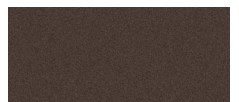
Burgundy Frost



Burnished Slate Frost



Charcoal Frost



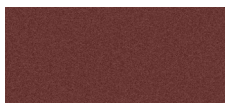
Cocoa Brown Frost



Evergreen Frost



Gallery Blue Frost



Rustic Red Frost



Black Matte



Bright White Matte



Bronze Matte



Burgundy Matte



Charcoal Matte



Evergreen Matte



Gallery Blue Matte



Rustic Red Matte



Copper Penny



Patina Green

### Need a Physical Sample?

Scan the QR Code and fill out the form to get all the details about getting a physical sample.





## About our High-Performance **SMP** Paint System

Our Silicon-Modified Polyester (SMP) paint systems are designed to provide outstanding performance, offering durability and protection that rivals 70% PVDF coatings. Established through years of testing and innovation, these systems utilize a two-coat coil coating process to ensure superior results.

This two-coat SMP coil coating system incorporates ceramic and inorganic pigments to deliver excellent performance and protection against harsh environmental conditions. Specifically tailored for the metal construction industry, this system has been extensively tested to ensure reliability and long-lasting results.

SMP coatings are known for their durability and versatility, making them ideal for a range of applications, including residential, agricultural, and commercial projects.

## Key Features of the **SMP** Paint System

### Industry Reputation

SMP paint systems are trusted across the metal construction industry. Known for their robust performance, these coatings rival high-end PVDF systems and are backed by years of rigorous testing in extreme conditions. The standard color palette ensures wide availability and efficient ordering processes.

### Durability and Longevity

SMP systems offer exceptional durability and long-term protection, including:

- Superior UV protection
- Resistance to moisture
- Defense against chalking, fading, weathering, staining, scratching, and abrasion

Additionally, these systems minimize dust accumulation and retain gloss levels significantly longer than many competitor products.

### Color Stability

The advanced formulation of SMP paint systems ensures long-lasting, fade-resistant color stability. Utilizing ceramic and inorganic pigments, these coatings provide reliable and vibrant finishes that stand the test of time. The standard color palette makes it easy to select and order coatings for various projects.

### Weatherability

SMP paint systems are industry leaders in weatherability, offering exceptional protection against extreme environmental conditions, including UV exposure and moisture. These systems are rigorously tested in severe climates, such as the intense sun and heat of southern Florida, to ensure their ability to withstand high temperatures and other challenging conditions.

### Sustainability

Sustainability is a core feature of these paint systems. With infrared reflective pigments, the SMP coatings reduce heat absorption and reflect visible light energy. This helps mitigate the urban heat island effect, lowers air conditioning costs, and reduces peak energy demands, making them an environmentally conscious choice.

